



# Certificate



## ROBOTIC DEMOLITION COMPANY OF THE YEAR IN CANADA 2024

# Controlled Demolition Group

## Supercharged Safety and Efficiency

Controlled Demolition Group, a specialty demolition service contractor, has built an impeccable reputation by tackling the most challenging, technically demanding and environmentally sensitive projects across Ontario and Toronto.

Harnessing the power of innovation, Controlled Demolition Group pioneers a strategic way of thinking and approaches every project with a simple question: How could this be done differently, with a strong focus on safety, speed and efficiency. It recognizes the shortfalls of traditional industry practices and challenges the status quo with its fleet of demolition robots.

The robots are an unmatched solution for executing projects that pose significant health and safety risks to a human workforce.

“Bringing robotics to the forefront of a trade that is involved early in the construction cycle goes hand-in-hand with innovation,” says Bart Fudala, Principal.

Controlled Demolition Group’s robots provide exceptional precision, safety, sustainability and efficiency, making them the optimal choice for all infrastructure construction projects, including transit, civil, industrial, and power generation. Its innovative, eco-friendly robots stand as the only viable, high-performance solution to meet modern construction project needs.

### Where Safety and Efficiency Become the ROI

Preventing accidents and mitigating risks come with the inherent consequences of sluggish project pace due to the need for multiple safety checks. The

ever-increasing complexity of modern construction projects inevitably translates to significant delay, resulting in cost overruns. Controlled Demolition Group perfectly balances safety, efficiency and accessibility with robotics.

Its fleet of robots is the answer to addressing these issues and expediting a project’s schedule. The robots are exponentially more productive than traditional methods and accelerate the demolition all the while meeting the increased safety threshold.

The robots are operated by remote control, providing operators with an unlimited range of vantage points to safely operate from afar. This allows operators to constantly have an overview of the work environment and keep that environment safe for all workers. Construction projects can also overcome the persistent challenge of finding skilled labor and general labor shortages with robots taking over tasks.

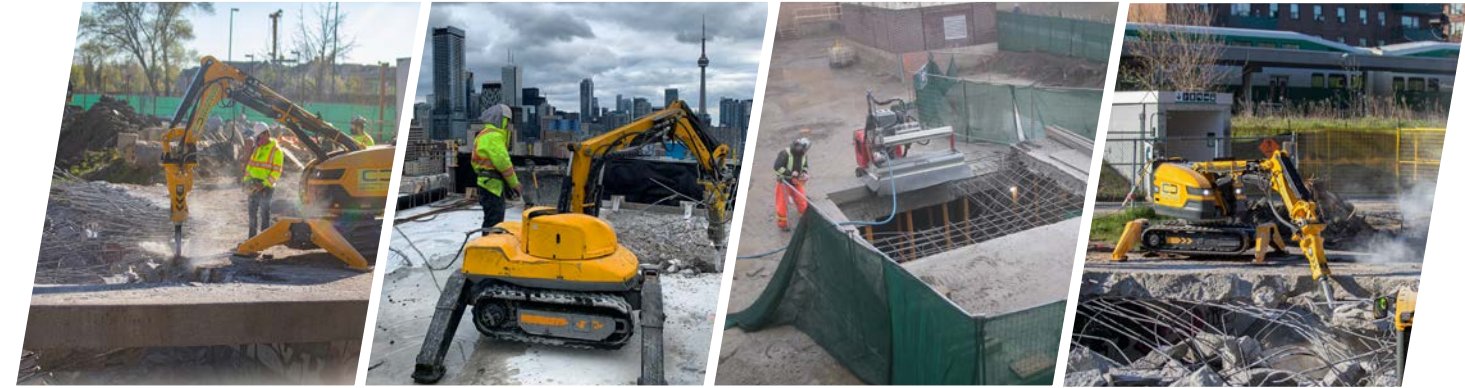
Engineered to deliver high performance, the eco-friendly robots have a compact design that does not come at the cost of sacrificing power. They outperform diesel-powered machinery of equal size and 3 to 5 times larger. The simple reason; these robots are specifically designed and engineered for demolition. They are not converted from an existing piece of equipment originally designed and engineered for a different task.

### Environmental Sustainability and Lowering Carbon Footprint

Environmental regulations are becoming even more stringent, and the

construction industry faces many challenges ahead to meet these increasing environmental prerequisites. The Controlled Demolition Group fleet of Robots is fully electric, allowing for an emissions free work environment. This capability not

robots leading the charge. Its team of professional engineers, managers and operators safely and successfully work in confined spaces and interiors to demolish utility vaults and suspended slabs.



only opens a wide range of possibilities on a construction project, it also allows for lowering the dependency on carbon based fuels, which leads to significantly lowering the overall carbon foot print of a project.

### Fueling Demolition Success

Power-packed with unparalleled benefits, Controlled Demolition Group’s robots serve as unconventional and indispensable means that empower clients to push the construction envelope.

With almost two decades of industry experience, the team encourages clients to accept and successfully execute more complex projects. They prove their proficiency in tapping into intricate construction designs, engineering and architecture. They constantly address the dangers and risks involved in complex demolitions, upholding standards of safety.

From bridges and overpass rehabilitation to underground excavation and drilling, the robots play an instrumental role. A special division of Controlled Demolition Group’s robots, used in hydro demolition applications, also prove to be very efficient in full and partial depth concrete removals, rehabilitation and surface preparation. Dismantling, descaling and material handling operations in nuclear demolition are easy with Controlled Demolition Group’s

“Bringing robotics to the forefront of a trade that is involved early in the construction cycle goes hand-in-hand with innovation”

The team takes a systematic approach to delivering its ground-breaking solution. It begins with a thorough project risk assessment by evaluating goals, schedules and challenges. Based on the evaluation, it selects the appropriate solutions from its fleet of robots and innovates solutions. This collaborative approach catalyzes the client’s journey toward seamless and efficient demolitions.

“Our success is married to our clients’ success,” says Fudala. “When their culture of innovation and spirit to innovate combines with ours, we can lay the foundation for their continual success.”

Partnering with Controlled Demolition Group is an important piece of the demolition puzzle for clients aspiring to achieve success. Besides robotic demolition, its specialty services include robotic hydro demolition. Steering

ahead, the company has aggressive growth plans, aiming to expand nationwide and branch out internationally.

Controlled Demolition Group’s commitment to creating a revolution in the industry with its trailblazing demolition robots positions it as a trusted partner for setting construction companies on a transformative journey, marked by superior productivity, safety and profitability. <#>